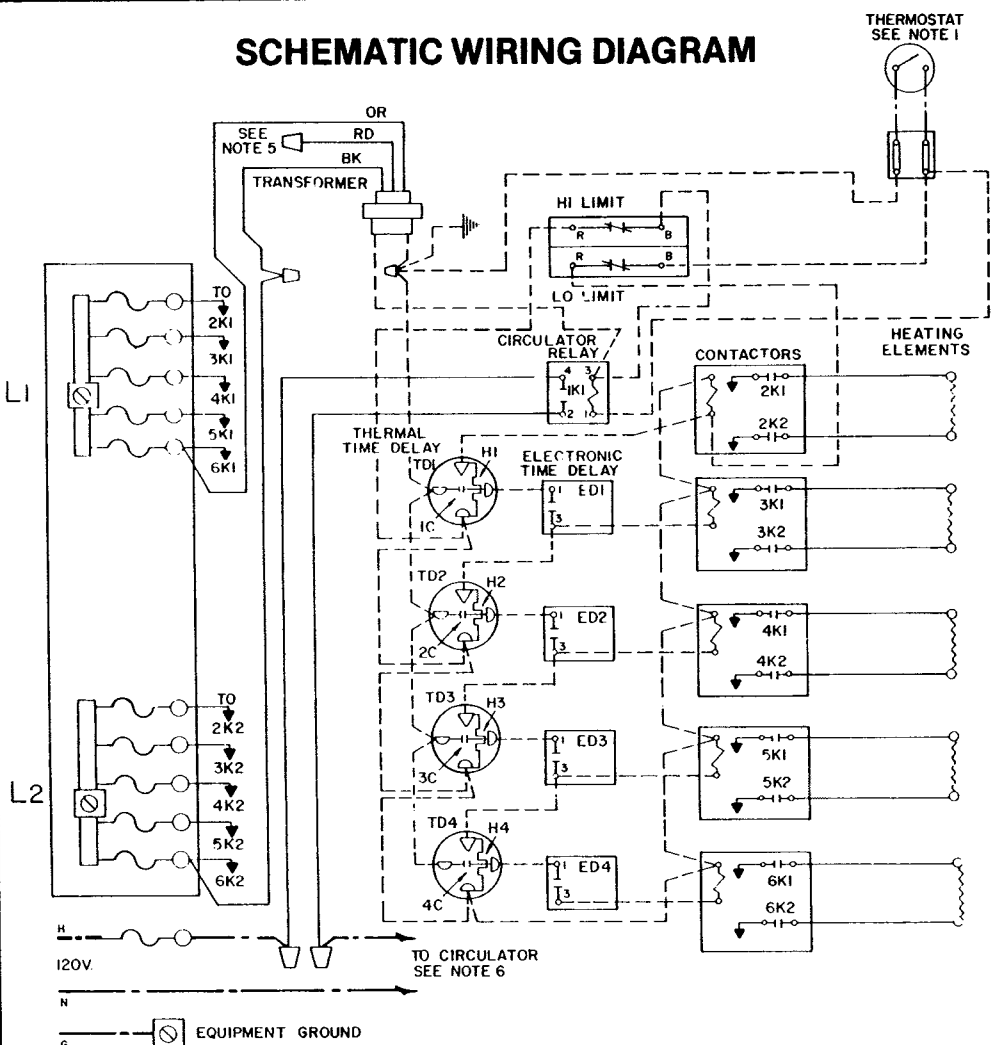


# SCHEMATIC WIRING DIAGRAM



THERMOSTAT  
SEE NOTE 1

SEE  
NOTE 5

TO CIRCULATOR  
SEE NOTE 6

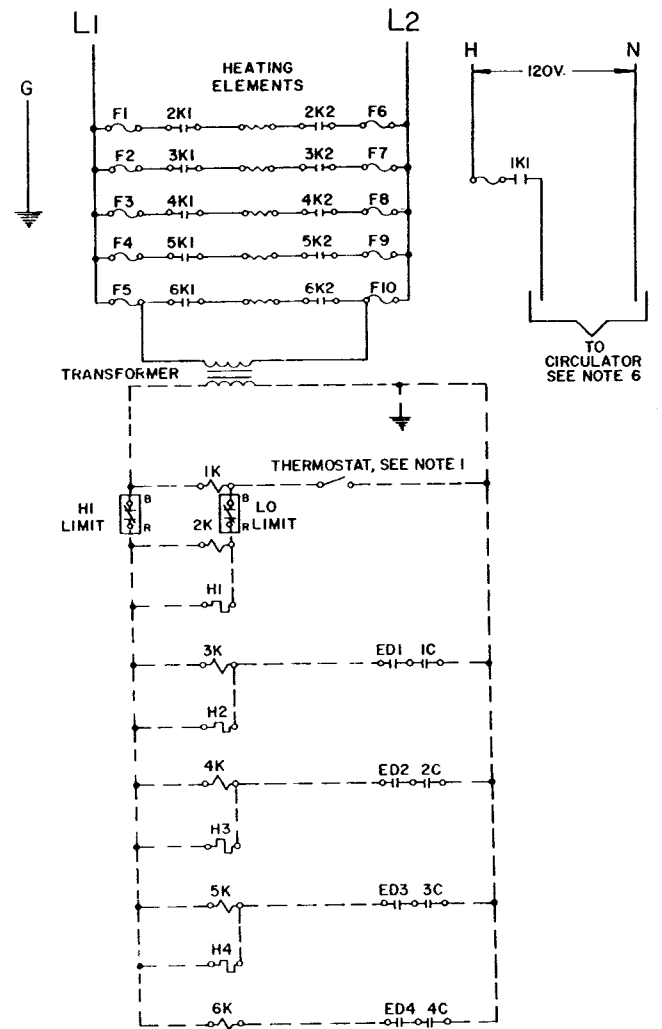
WIRING LEGEND: ——— HIGH VOLTAGE FACTORY WIRING      - - - - - HIGH VOLTAGE FIELD WIRING  
 - - - - - LOW VOLTAGE FACTORY WIRING      - - - - - LOW VOLTAGE FIELD WIRING

**CAUTION** Disconnect power source before installing and/or servicing unit.

**WARNING**

- NOTES:
1. Thermostat heat anticipator setting must be 0.5 amps.
  2. All wiring must be installed in accordance with the requirements of the National Electrical Code and any additional national, state, or local code requirements having jurisdiction.
  3. All safety circuit wiring must be N.E.C. Class 1.  
Do not use aluminum conductors.
  4. Use only copper conductors for power input wiring.
  5. For 208 Volt Power Supply, remove orange wire and replace with red wire.
  6. Maximum circulator motor, 1/8 H.P.

# LADDER WIRING DIAGRAM



WIRING LEGEND: ——— HIGH VOLTAGE FACTORY WIRING  
 - - - - - LOW VOLTAGE FACTORY WIRING  
 - - - - - HIGH VOLTAGE FIELD WIRING  
 - - - - - LOW VOLTAGE FIELD WIRING

CER, Series 2 Electric-Hydronic Boiler Schematic and Ladder Wiring Diagrams. For 240/60/1 or 208/60/1 electrical power supply.

**WEIL-McLAIN**  
 Michigan City, Indiana 46360  
 A Marley Company